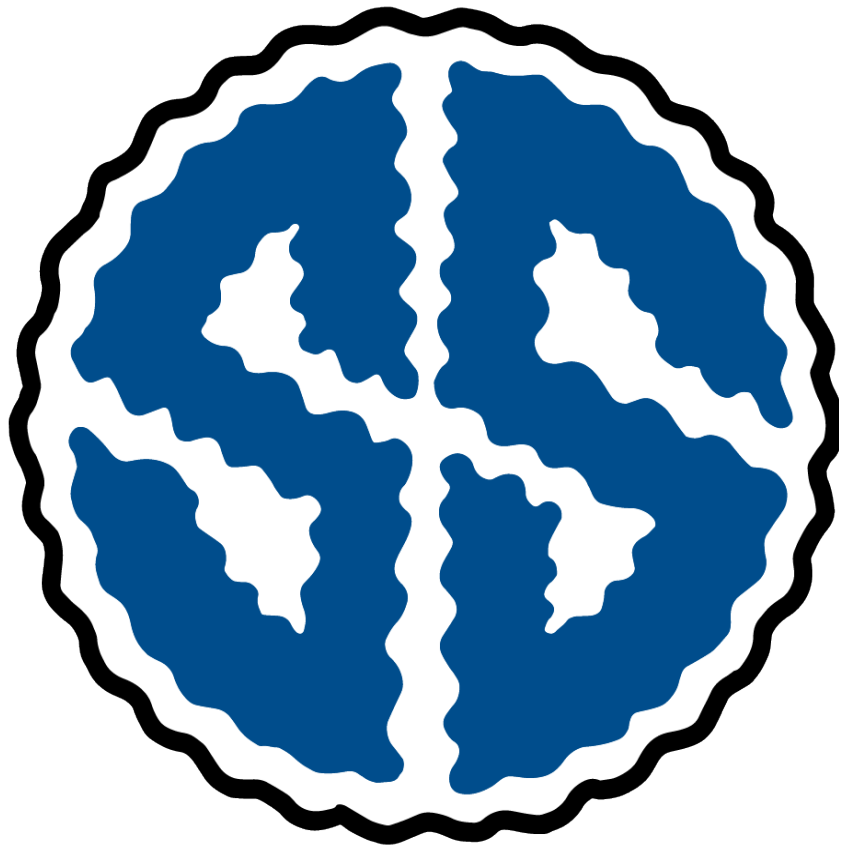


## Shinka Strategies

*Bridging Tradition and  
Innovation for Modern  
Business Growth.*



# DIGITAL TRANSFORMATION TOOLKIT

A comprehensive toolkit designed to modernize your business while respecting traditional values.

Prepared By:  
**Michael Smith**

[Shinkastrategies.com](https://shinkastrategies.com)



# Table Of Content

---

<b>Table of Content</b>	<b>03</b>
-------------------------	-----------

---

<b>Introduction</b>	<b>04</b>
---------------------	-----------

---

<b>Tools Needed</b>	<b>06</b>
---------------------	-----------

---

<b>Safety Warnings</b>	<b>07</b>
------------------------	-----------

---

<b>Step-by-Step Procedures</b>	<b>08</b>
--------------------------------	-----------

---

<b>FAQs/Troubleshooting</b>	<b>10</b>
-----------------------------	-----------

---

<b>Contact Us</b>	<b>09</b>
-------------------	-----------

---

# Welcome to Shinka Strategies!

Thank you for choosing Shinka Strategies to support your business's journey toward modernization and growth. We understand the importance of honoring tradition while embracing the opportunities of the digital age. Our Digital Transformation Toolkit is designed to empower businesses like yours, helping you connect with your customers in new and meaningful ways.

## Why Shinka Strategies?

Our mission is simple: to bridge tradition and innovation for modern business growth. Shinka Strategies offers intuitive, culturally sensitive tools that help your business thrive in a competitive digital landscape. We specialize in solutions tailored for small to medium-sized businesses, blending cutting-edge technology with a respect for heritage.

## Purpose of This Manual

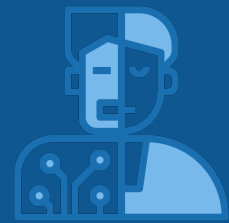
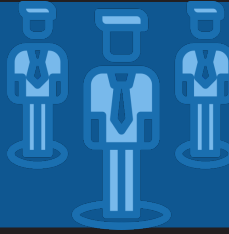
This manual is your step-by-step guide to setting up, using, and maintaining the tools in our Digital Transformation Toolkit. Whether it's building your first website, launching a marketing campaign, or streamlining your operations, we're here to ensure you have everything you need to succeed.





## The Benefits of Using the Toolkit

- Save time on manual tasks with automated tools
- Reach new customers through modern marketing channels.
- Preserve your business's traditions while adapting to the future.



# Tools Needed

To make the most of Shinka Strategies' tools, ensure you have the following items ready:



## Hardware

Any modern device with internet access can be used. We recommend using a computer for the best experience, especially for advanced features like the website builder or marketing templates.

---



## Software

Ensure you have an up-to-date browser such as Google Chrome, Firefox, Safari, or Microsoft Edge. Older versions may not support all features.

---



## Account Information

Have your email and password ready to access the Shinka Strategies dashboard.

# Safety Warnings

The Shinka Strategies Digital Transformation Toolkit is designed for ease of use and reliability. To ensure a safe and secure experience, please review the following safety guidelines:



## Data Security

- Do not share your username or password with others.
- Use a strong password, including a mix of letters, numbers, and special characters.
- Add an extra layer of security to your account by enabling 2FA in your account settings.



## Device Safety

- Regularly update your computer, tablet, or smartphone to the latest software version.
- If using the toolkit to collect customer information, ensure compliance with local privacy regulations.
- Be cautious of unsolicited emails requesting account information. Always verify the sender's authenticity before clicking any links.



## Common Risks to Avoid

- Be cautious of unsolicited emails requesting account information. Always verify the sender's authenticity before clicking any links.
- Avoid using public Wi-Fi when accessing sensitive business tools. If necessary, use a VPN (Virtual Private Network) for added security.

# Step-by-Step Procedures

## Getting Started with Your Digital Transformation Toolkit

### Step 1: Accessing Your Account

1. First, visit the Shinka Strategies Website:
  - Open your web browser and navigate to [www.shinkastrategies.com](http://www.shinkastrategies.com).
2. Log In to Your Dashboard:
  - Click on the "Log In" button in the top-right corner.
  - Enter your email and password, then click "Submit."
  - Graphic: Screenshot of the login page with fields highlighted.
3. Enable Two-Factor Authentication (Optional but Recommended):
  - Navigate to your account settings and enable 2FA for enhanced security.

### Step 2: Navigating the Dashboard

1. Explore the Layout:
  - The dashboard includes the following sections:
  - Tools: Access all features of the toolkit, including the website builder and marketing templates.
  - Reports: View analytics and performance metrics.
  - Support: Find tutorials, FAQs, and contact information.
2. Start with Tutorials:
  - Click on "Help" in the top menu to access beginner tutorials tailored to each tool.
  - Graphic: Annotated dashboard screenshot highlighting key sections.

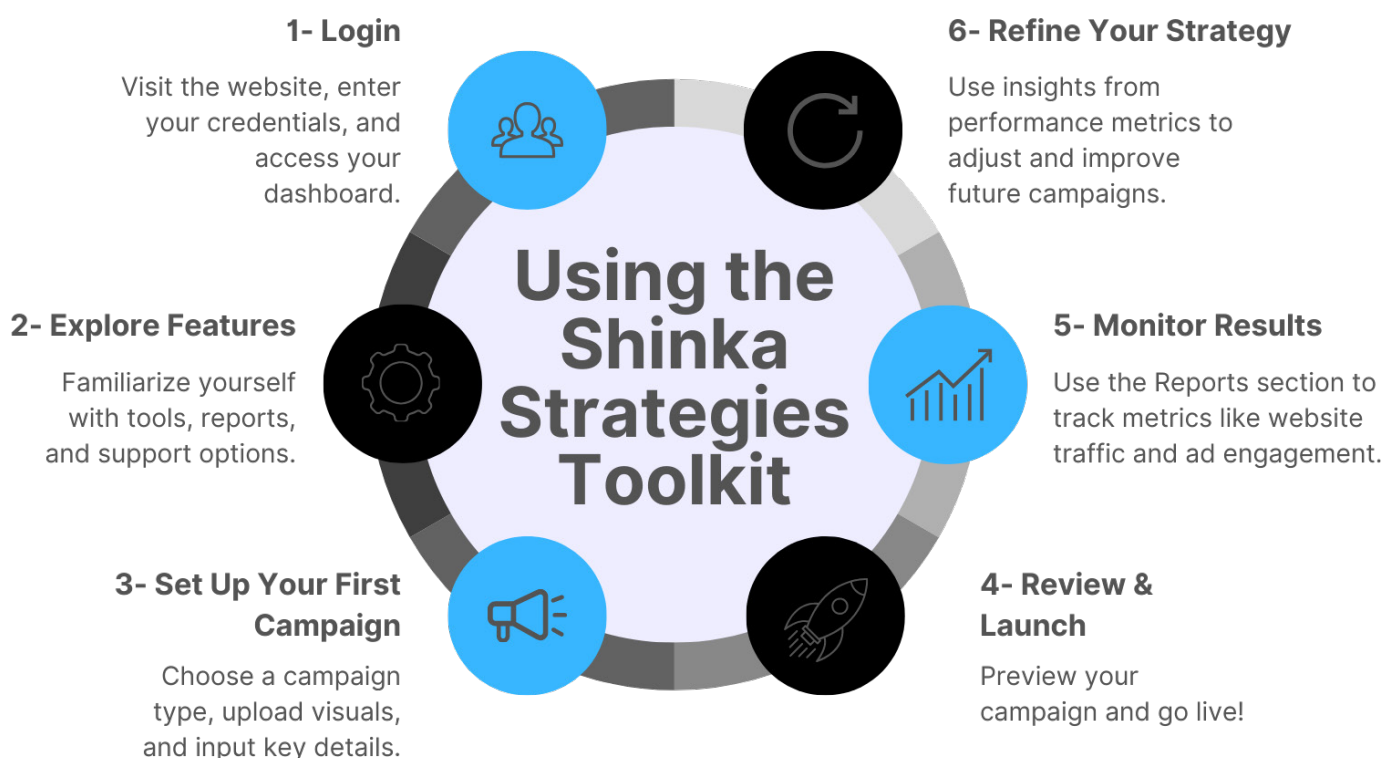
### Step 3: Setting Up a Marketing Campaign

1. Choose Your Campaign Type:
  - Go to the "Campaigns" section and click "Create New Campaign."
2. Follow the Prompts:
  - Input your campaign goal (e.g., increase website traffic, customer engagement).
  - Upload photos, videos, or graphics to enhance your ad.
  - Graphic: Example campaign setup screen with fields labeled.
3. Review and Launch:
  - Preview your campaign and ensure all details are correct.
  - Click "Launch Campaign" to go live!



## Step 4: Monitoring Performance

1. Access the Reports Section:
  - Click on "Reports" in the main menu.
2. Filter Metrics:
  - Select specific metrics like website traffic, ad engagement, or email open rates to analyze performance.
  - Graphic: Sample analytics graph with key data points labeled.
3. Export Data:
  - Lastly, use the "Export" button to download reports in your preferred format (PDF, CSV).



### Helpful Tips for Success

- **Start Small:** Focus on one tool at a time to avoid feeling overwhelmed.
- **Test and Adjust:** Regularly review performance metrics and tweak your campaigns to optimize results.
- **Use Tutorials:** Don't hesitate to revisit the tutorials if you need additional guidance.

# FAQs and Troubleshooting

## Q: What is the Shinka Strategies Digital Transformation Toolkit?

A: It's a suite of tools and resources designed to help small to medium-sized businesses modernize operations, improve marketing, and enhance efficiency while respecting traditional values.

## Q: How do I log in to my account?

A: Go to [www.shinkastrategies.com](http://www.shinkastrategies.com) and click "Log In." Enter your email and password. If you've forgotten your password, click "Forgot Password" to reset it.

**LOGIN**

## Q: Is the toolkit compatible with all devices?

A: Yes, the toolkit works on most modern devices, including computers, tablets, and smartphones. For the best experience, use a computer with a stable internet connection.

## Q: Can I customize the tools for my business?

A: Absolutely! The toolkit is designed to be fully customizable, allowing you to tailor features to meet your specific needs.

## Q: How can I contact support if I need help?

A: You can reach us via email at [support@shinkastrategies.com](mailto:support@shinkastrategies.com), or use the live chat feature on our website during business hours.

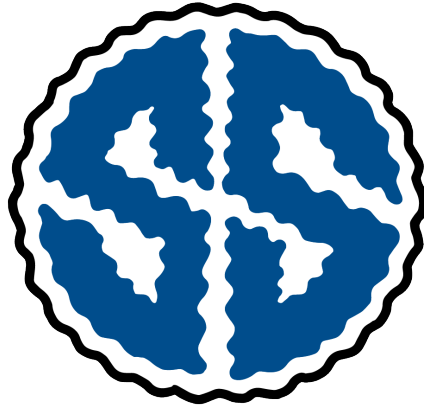


### Issue: Unable to log in.

- Solution:
  - Check your internet connection.
  - Ensure you're using the correct email and password.
  - Reset your password if necessary by clicking "Forgot Password."

### Issue: My campaign isn't performing as expected.

- Solution:
  - Review your campaign settings to ensure accurate targeting.
  - Experiment with different visuals or messaging.
  - Check the "Reports" section for insights and adjust accordingly.



# Shinka Strategies

**WE  ARE HERE  
TO HELP!**

If you have any questions, concerns, or need further assistance, our team at Shinka Strategies is ready to support you. Below are the various ways you can contact us:

---



◀ Email: [support@shinkastrategies.com](mailto:support@shinkastrategies.com)

◀ Live Chat:

- Availability:
- Monday to Friday, 9:00 AM to 6:00 PM (JST).
- How to Access:
- Visit [www.shinkastrategies.com](http://www.shinkastrategies.com) and click on the "Live Chat" icon in the bottom-right corner.